



WINDOWS & DOORS



THE NUMBERS SPEAK FOR THEMSELVES:

25	➤	YEARS OF EXPERIENCE
70 %	➤	OF BUSINESS FROM RECOMMENDATION
1 250	➤	FACTORY STAFF
2 500	➤	SALES OUTLETS WORLDWIDE
7 000	➤	WINDOW UNITS MANUFACTURED DAILY
580 000 ft²	➤	OF PRODUCTION AREA
1 250 000	➤	SATISFIED CUSTOMERS
4 000 000	➤	WINDOWS SOLD



Who's OKNOPLAST?

We are a multinational company based in Krakow, Poland who specialise in designing and manufacturing energy-efficient and visually unique PVC windows and doors. In a very competitive Polish market with over 3,000 window manufacturers, we have to improve everyday to maintain our position as the market leader – not only in Poland but across the European Union.

What is the key to our success?

“We have always considered maximum customer satisfaction to be our top priority. We are proud to consistently achieve this. In our business, one of the most challenging tasks is to ensure the long-term satisfaction of our customers. For this reason, we are pleased with every positive review of our windows and doors, but we also feel motivated to continuously improve. Top-quality products and professional sales as well as partnership, reliability and honesty in relations with our customers and business partners – these are the foundations of our success and have enabled us to build trust among thousands of customers. We hope that, thanks to our passion, we will be a part of their homes for many, many years!”

Mikolaj Placek
President

CAREFULLY SELECTED QUALITY SOLUTIONS FOR YOUR HOME

All our products are characterised by premium quality. In our development laboratory we continuously test new products and improve our existing ones. This results in premium quality products for customers, meeting the demand for modern designs and features.

Apart from security OKNOPLAST windows provide comfort and functionality to its customers. Solutions such as low threshold, slide window or special external door handle meet even the highest expectations.

We realize that a window is one of the most important elements of the interior. Our solutions enable any window to get a unique character by offering a wide range of colors, shapes and accessories.

ONE OF EUROPE'S LEADING COMPANIES IN PVC SOLUTIONS

- Over 25 years of experience in window manufacturing
- Customer-centric guidance, assembly and service
- One of Europe's leading window manufacturer
- Our own patented profile systems with low U-values and unique design
- Up to 10 years' warranty on all windows
- Over 40 innovative and trendsetting solutions
- Our own insulated glass factory – ensuring glass of highest quality

CERTIFICATES



Q-Zert Certification

Because our products and regulations fulfil the requirements of the European EN 14351-1:2006 standard.



IFT Rosenheim certification

Because the Winergetic Premium Passive line, among others, meets the requirements set for passive buildings.



ISO 9001:2008 Certification

Because OKNOPLAST Krakow has introduced and applied the BS EN ISO 9001:2008 quality management system.



P-marking

Our products are P-marked. This means products meet the legal or regulatory conditions and, in most cases, also other and even higher requirements set for the market. The certification includes extensive regulatory visits and satisfying the minimum requirements related to indoor environment aspects, strength qualities and functional properties.



Italian CasaClima certification

CasaClima certificate awarded by one of the most influential building energy certification institutes on the Italian market to Winergetic and Winergetic Premium Passive windows for excellent energy-saving parameters.



French CEKAL certification

Glass panes manufactured for the French market by OKNOPLAST have been certified by the prestigious institute in Paris, which guarantees that glass production at the OKNOPLAST factory achieves the most stringent requirements of the French market.

ENVIRONMENTAL RESPONSIBILITY

ENERGY SAVINGS

Our PVC windows come triple-glazed as standard and offer remarkable U-values providing our clients with the comfort of a warm home while minimising their energy bills and carbon footprint.

RECYCLING

High-quality PVC profiles are almost 100% recyclable. Furthermore, many of our profiles are made from recycling.

FIRE SAFETY

PVC has a much higher ignition temperature than wood, for example, and is also self-extinguishing.

MAINTENANCE-FREE - KIND TO THE ENVIRONMENT

PVC windows are almost entirely maintenance-free, non-scratch and do not require re-painting. You get to enjoy the low U-value, colour and function for many years to come.

WE DEBUNK MYTHS ABOUT PVC



PVC sections yellow and become damaged

There is no evidence that PVC becomes damaged over time. Today's PVC contains titanium dioxide, which ensures full immunity to UV radiation.

PVC is sensitive to solar radiation, which may cause cracking

The truth is that cracks may form on a PVC section, however it only happens when the material used to manufacture it was processed too many times or the layer applied was too thin. At Oknoplast, we use only new or high-quality recycled PVC conforming to the highest industry standards.

PVC windows may increase the risk of fire inside the building

PVC is an inherently fire resistant plastic, the only exception among the general-purpose plastics. How is that possible? The main component of PVC is salt, which is highly resistant to fire.

PVC contains dangerous compounds

Not really. The Norwegian Green Building Council states in its documents that PVC sections do not contain heavy metals or any other compounds harmful to health.

PVC cannot be reprocessed

It's not exactly the case. Laboratory tests show that PVC can be reprocessed even by conventional methods and used for manufacturing different useful products like traffic cones, garden hoses or floor mats.



PVC is not strong enough

OKNOPLAST uses highly-engineered, steel-reinforced PVC profiles, ensuring significantly improved structural strength compared to poor quality PVC profiles.

PVC production is harmful to the environment

PVC is one of three types of plastic that emit the least CO₂ and consume the least energy in production. There is good potential to reduce these emissions and energy consumption even further with new technology.

PVC does not ensure good insulation

PVC windows have more than good insulation properties. Since PVC contains no organic materials, the window is resistant to rain and provides good insulation under any weather conditions.

PVC can only be made of oil

Today's PVC is produced with 45% oil and natural gas - the rest is just common salt. However, the oil and natural gas can be replaced with renewable resources, like ethylene or ethanol, which is the objective of the European window industry leaders like OKNOPLAST.

Keeping PVC clean is hard

Although it is important not to use bad window cleaning products (for example: a dishwashing detergent could damage the window), PVC windows are very easy to maintain. You need no sandpaper or wire brush, all you have to do is to wipe the window with a damp cloth.

WITH YOU EVERY STEP OF THE WAY



NEEDS ASSESSMENT

Our expert advisors provide you with a professional insight.

For individual orders we start with precise dimensioning of the windows and then move on to manufacturing them exactly according to the client's expectations. We always adjust the project for specific parameters of the building, room layout and individual needs of the client.

CONSULTING AND SALES

Our sales consultants provide you with professional service and expert advice on each stage of the project.

We use our knowledge and experience to help you make the best informed decisions about the big investment you're making.

We also take care of all the technical stuff so you don't have to worry about any of it. We liaise with the Architect/ Builder to make sure everything will be just as you want it.



PROJECT SUPERVISION

We meticulously supervise the assembly process and maintain high standards of quality control.

The products are then custom-packaged and securely transported to Ireland. Installation is scheduled well in advance and performed by our skilled and experienced crews to the highest industry standards.

This way we ensure your windows stay fully functional and provide appropriate insulation over their long lifetime.

WARRANTY SERVICE

Our long-time experience in window manufacturing translates to premium quality of our products.

That's why we are happy to provide 10 years' warranty on all our windows, because chances are this warranty will never need to be exercised by you. Furthermore, our warranty is a comprehensive, all-round cover which includes all parts of the window.

MORE COMFORT



ENERGY SAVINGS

- Our patented design profiles not only look exceptional, but are also designed in such a way as to maximise their energy performance. They are top-grade, 6- and 7-chamber PVC profiles manufactured exclusively for us by VEKA, the world leader in PVC production.
- Compared to traditional windows, our glass units have better light transmittance - making them better at brightening up the interior.
- The innovative three-chamber glass casements are filled with krypton gas (U-value 0.3 W/m²K*) or argon gas (U-value 0.4 W/m²K**).
- The WARMATEC warm edge (spacer) improves insulation in the glass edge zone.

* 3TF/14cKr/3/12cKr/3TF

** 3TF/14c/3/12c/3TF/14c/3TF



VISIBLE DETAILS

- The Invisso concealed hinge is an option available for all systems.
- Great selection of window fittings (handles, hinge protection and fixing brackets)
- The dESIGN+ series has been designed and developed in hand with the well-reputed KISKA projects studio, who also work with companies such as Audi and KTM.
- The ability to choose from over 50 colours allows perfect integration of the window into the home setting.
- Windows with ColorFull add colour to the entire window frame, providing uniform colour and structure across the whole surface. The colour is visible once the window is opened.
- Windows available in various geometric shapes such as circles, bows, triangles and trapezes.
- Meticulous welding - nearly invisible weld joints.



STRENGTH AND QUALITY

- Our PVC profiles are the highest, grade A quality, reinforced with 3 mm thick galvanized steel reinforcement in a closed profile (both the frame and sash).
- The weather gaskets are made from synthetic rubber, which is very resistant to extreme weather conditions.
- The insulation glass is denser due to the bowed spacers located in all corners.
- Window hardware from top manufacturers in the world allows for opening very large windows and ensures a long lifespan with great functionality.
- Micro-ventilation



SAFETY

- The Winkhaus Prolight fittings are furnished with burglary resistant mounts.
- Thanks to the top-quality hardware, all of our windows have a circuit locking mechanism, meaning they lock in multiple points around the circumference of the window.
- Because of this, we offer a minimum of RC1 burglary resistance class in line with European standards, with an option of upgrading to the improved security RC2 class.
- Our products can also be manufactured with built-in intruder alarm sensors, which can be connected to your own alarm system and are invisible when the window is closed.



**MORE
INSPIRATION**

WINDOWS

The high reputation of our
.....
windows springs from good quality,
.....
innovative solutions, burglary
.....
resistance and great energy
.....
properties.
.....

Profiles are manufactured with finesse and
assembled with precision, to give our windows
their characteristic look.





INDEX

WINDOWS

PIXEL



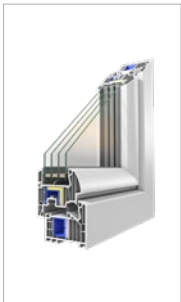
- U-value=0.8 W/(m²K)
- Frame depth - 70 mm
- Profile height - 108 mm (frame + sash)
- Number of weather strips - 2
- Number of chambers - 6

WINERGETIC PREMIUM



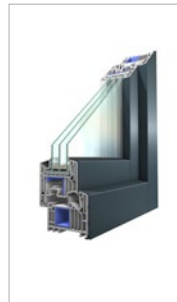
- U-value=0.76 W/(m²K)
- Frame depth - 82 mm
- Profile height - 124 mm (frame + sash)
- Number of weather strips - 3
- Number of chambers - 7

WINERGETIC PREMIUM PASSIVE



- U-value=0.59 W/(m²K)
- Frame depth - 82 mm
- Profile height - 124 mm (frame + sash)
- Number of weather strips - 3
- Number of chambers - 7

WINERGETIC ALU



- U-value=0.8 W/(m²K)
- Frame depth - 82 mm
- Profile height - 124 mm (frame + sash)
- Number of weather strips - 3
- Number of chambers - 7



BENEFITS OF PIXEL

- 1 An original, slimmer and more elegant profile that accentuates the nature of the interior.
 - 2 A unique shape, perpendicular angles, and no rounded edges.
 - 3 Lower profiles and larger glass areas for a more energy-efficient window.
 - 4 Adjufix mounting.
 - 5 Frames and sashes are steel-reinforced, which enables the manufacture of large windows.
 - 6 Bottom profile for mounting drip flashing.
 - 7 The option of sliding door designs based on: PSK-Z and PSK Atrium.
- Low U-values
 - The option of lockable handles and safety glass.
 - 10 year warranty, 10 year colour warranty.
 - Available in Alu-clad option.

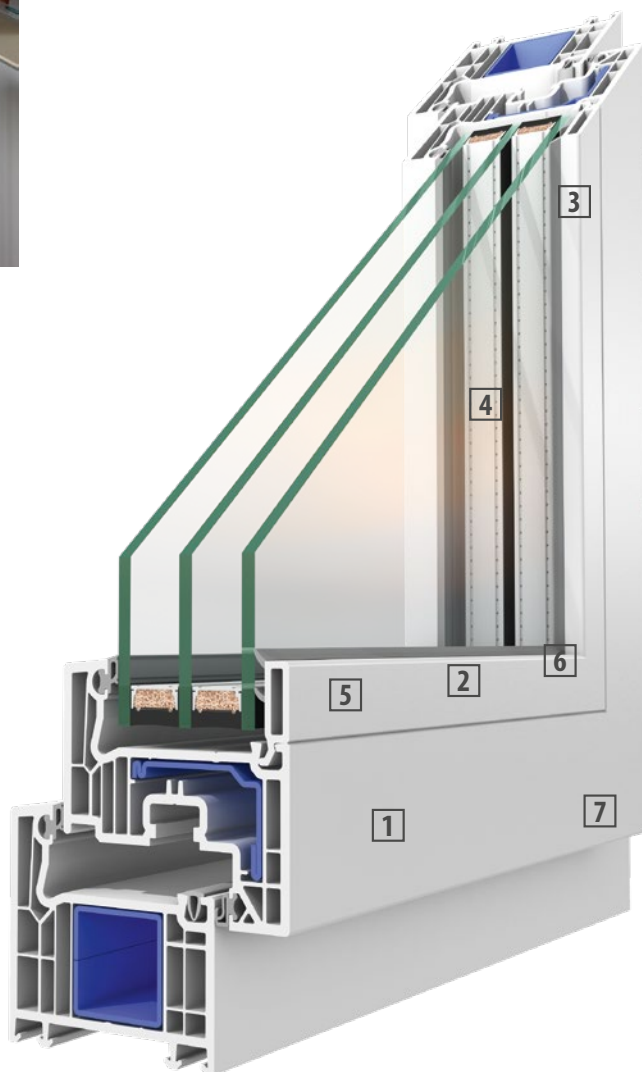


MORE BENEFITS PIXEL



HEAT TRANSMISSION COEFFICIENT

U-value = 0.8 W/(m²K)





PIXEL

HEAT INSULATION

- Elegant 6-chamber profiles in frames and sashes with a 70 mm recess depth.
- Efficient heat insulation guarantees low energy losses and reduced heating costs.
- Lower profiles and larger glass surfaces contribute to better energy performance as the aggregate U-value is reduced.
- The 0.8 W/(m²K) U-value with 3 panes and the Warmatec frame far surpass the strict requirements for heat insulation. The low U-value means better comfort and lower heating bills.

STRENGTH

- Designed and patented series with tough built-in steel reinforcements to provide the highest safety and enable the manufacture of large panes that last for many years.

DESIGN

- Simple and modern profile shape adapted to the latest trends in architecture.
- Square, sharply drawn profile edges and weather strips.
- Slim, removable mullion with a symmetrically positioned handle.
- Weather strips at the corners of the window moulding, fixed at a 45° angle.
- Pixel handle



FUNCTIONALITY

- The Winhaus ProLight fittings enable smooth movement of the sashes and protect against uncontrolled closing.
- A tilt-sliding door option for the product series: PSK-Z and PSK Atrium.
- Concealed hinges are also an option.

COMFORT

- Lower profiles and larger glass surfaces provide up to 22% more natural light in the room.
- Sound-proofing of up to 42 dB* provides efficient noise protection and turns any home into a silent oasis.
- The option of complementing with inter-panel blinds.
- Microventilation system.
- Low threshold option in PVC and/or aluminium (Win-step).

* for 1 air gap windows with reference measurements of 1230x1480 with glass 44.1 acoustic /12/4/12/44.1 acoustic.

SAFETY

- Designed and patent-protected suite with steel reinforcement to ensure the highest safety levels in the home.
- To further enhance window safety is the option of using burglar-resistant fittings of resistance class RC1 and RC2, laminated glass as well as burglar-resistant handles.



HEAT TRANSMISSION COEFFICIENT

U-value = 0.8 W/(m²K)

PIXEL

- 1 A slimmer, more elegant profile accentuates the nature of the interior.
- 2 A unique shape, perpendicular angles and no rounded edges.
- 3 Lower profiles and larger glass surfaces make for more energy-efficient glass.
- 4 Larger glass surfaces let in more daylight, with its positive effect on our lives.
- 5 Frames and sashes are steel-reinforced, enabling the manufacture of large windows.
- 6 Pixel is customized with the adjufix mounting to make the process faster and easier.
- 7 Apron groove is another option.

**MORE
GLASS**



**MORE
GLASS**



HEAT TRANSMISSION COEFFICIENT

U-value = 0.76 W/(m²K)

WINERGETIC PREMIUM

This window guarantees low heat loss and, consequently, reduces the heating costs.

- 1 Advanced heat insulation parameters.
- 2 Wide selection of insulation glass units, with up to 50 mm wide glazing.
- 3 A rounded profile shape on the outside.
- 4 Increased noise protection.

- Adjufix-customised for quicker and easier mounting
- Frame and sash are steel-reinforced, which enables the manufacture of large windows
- Low U-values
- Winergetic is available as an inward window door or a sliding door: PSK-Z and PSK Atrium
- Optional lockable handles and safety glass
- Fits Winergetic inward opening doors
- Concealed hinges are an additional option
- 10 year warranty, 10 year colour warranty

**MORE
HEAT**



HEAT TRANSMISSION COEFFICIENT

U-value = 0.59 W/(m²K)

Thanks to these energy-saving measures and the three-chamber insulation glass, these windows meet and exceed the requirements for passive houses.

- 1** Designed by OKNOPLAST for passive houses.
 - 2** Double thermal insulation SpaceBlock.
 - 3** Our best window with regards to heat transmission value (0.65 W/m²K) at (Ug=0.6) and warm edge (spacer).
 - 4** Rounded profile shape on the outside.
- Can be ordered with a quadruple-glass package
 - 10 year warranty, 10 year colour warranty and 10 year glass unit warranty
 - Concealed hinges are an additional option

WINERGETIC
PREMIUM
PASSIVE

**MORE
TECHNOLOGY**



HEAT TRANSMISSION COEFFICIENT

U-value = 0.8 W/(m²K)

WINERGETIC ALU

The Winergetic window can be fitted with external aluminium cladding, Alu-clad. This combines the PVC's efficient heat and sound insulation with an aluminium finish on the outside. The aluminium mouldings come in a tremendous variety of colours.

- 1** Winergetic Aluminium is available as an inward opening door and tilt-sliding door: PSK-Z and PSK Atrium
- 2** Advanced heat insulation parameters – low energy losses and reduced heating costs
- 3** Low U-values
- 4** Adjufix-customised, for quicker and easier mounting
- 5** Apron groove is an additional option
- 6** Aluminium cladding offers the choice of hundreds of colours

**MORE
VARIATION**

MORE VARIATION





INDEX

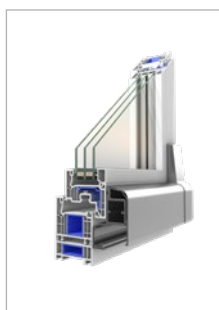
PATIO DOORS

HST PREMIUM



- U-value=0.8 W/(m²K)
- Frame depth - 197 mm (sash 85 mm)
- Profile height - 168 mm (threshold std + sash)
- Number of weather strips - 2
- Number of chambers - 5

PSK-Z (PIXEL), PSK ATRIUM (PIXEL)



- U-value=0.8 W/(m²K)
- Frame depth - 70 mm
- Profile height - 108 mm (frame + sash)
- Number of weather strips - 2
- Number of chambers - 6



**MORE
SPACE**



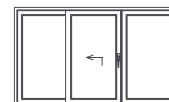
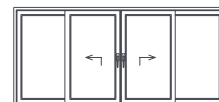
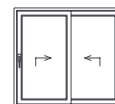
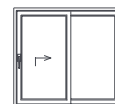


HST PREMIUM

LIFT SLIDING DOOR

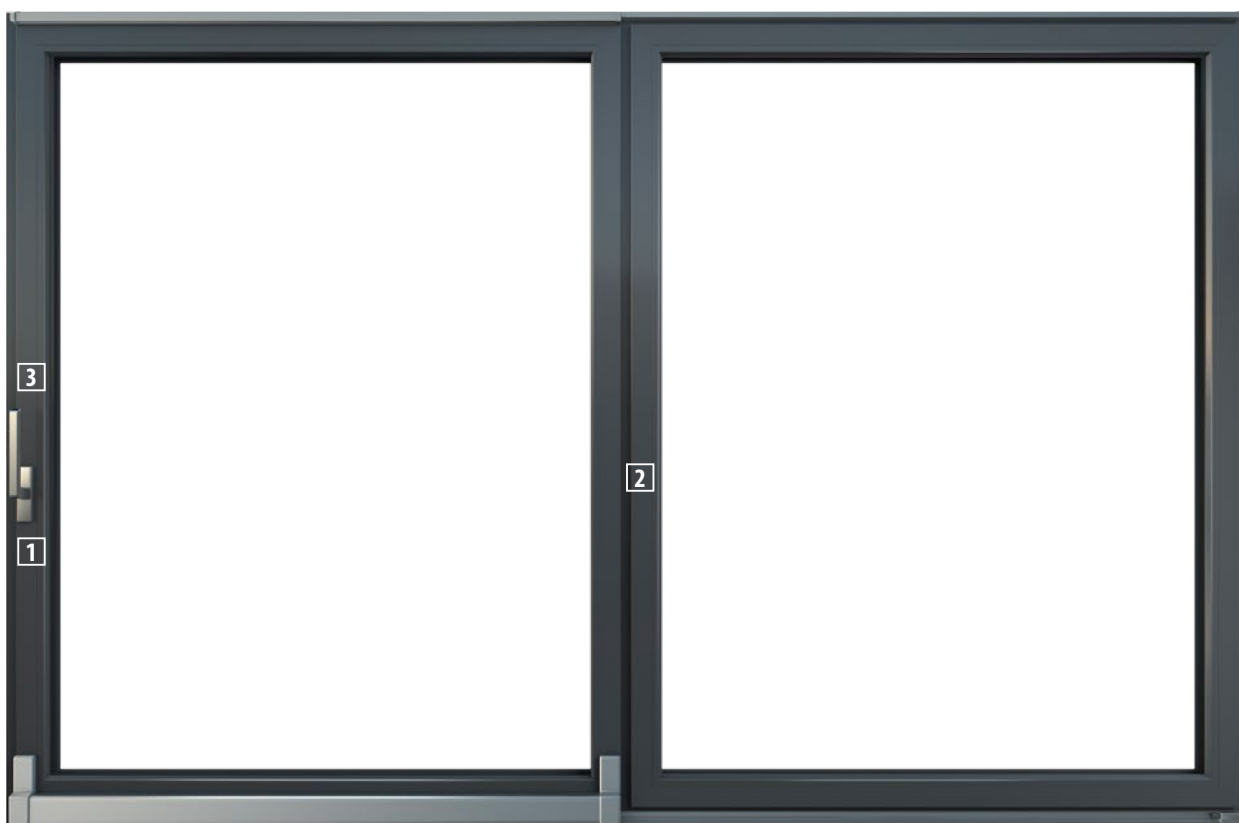
Modern construction solutions suitable for large sliding glass panes. Thanks to the high heat insulation and the option of a 24 mm low threshold, the sliding portion is ideal for home environments.

- 1** The lift and slide technology keeps the glazing unit stable and convenient.
- 2** The construction can be up to 6 m wide with a maximum possible height of 2.8 m.
- 3** Special handles and push handles make for easy opening and closing of the sliding doors.
- 4** Special 68 mm insulated threshold to eliminate cold-bridging underneath the door.
- 5** The option of RC2 class burglary resistant fittings and P4 glass.
- 6** The option of adding a motor drive to the sliding door and connecting it to a “smart home.”



*a two-piece lift-sliding door with one or two removable casements

**MORE
FREEDOM**



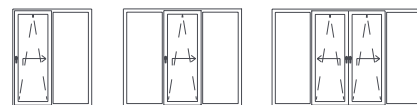


PSK-Z

TILT-SLIDING DOOR

The perfect solution for making better use of those spaces around the terrace and garden. The large glass surfaces provide great light transmittance and amazing character.

- 1** A sliding door with a tilt function and special features enable tilting of the door for ventilation. The door unit can be manufactured in any width up to 1.6 m.
- 2** PSK-Z may be included in all OKNOPLAST window systems.
- 3** The Winergetic Premium and Konzept units have the option to include a two-sided handle with a key set. The PSK-Z-door can be used, in most cases, as an extra entrance.



**MORE
COMFORT**



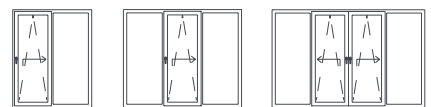


PSK ATRIUM

TILT-SLIDING DOOR

A new, smart solution for incorporating terraces and gardens. The large glass surfaces provide great light transmittance and amazing character.

- 1** A sliding system where doors up to 1.6 m wide can be conveniently opened, creating a door opening wider than 1.5 m.
- 2** Special fittings to open and close large sliding doors with a simple hand movement.
- 3** The fittings have special brackets that return the sliding door into its closed position with just a turn of the handle.
- 4** Micro ventilation around the door wing.
- 5** In the micro ventilating position, the sliding door is always latched.
- 6** The opportunity to use large glass panes, up to a max height of 2.35 m.



OPTIONS

AND ACCESSORIES -

COMFORT



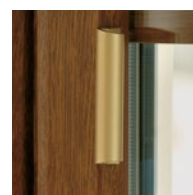
WARMATEC

Warmatec warm edge spacer is made from stainless steel and plastic, providing a perfect combination of premium performance and aesthetics. Warmatec reduces the risk of condensation in window corners, where it is the coolest. May be included in all glazing units, available in black, brown and grey.



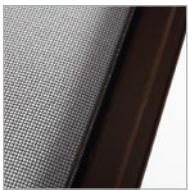
LOW INSULATED THRESHOLD

The low 24 mm threshold in PVC and aluminium makes it easy to step out onto the balcony or terrace.



WIN CLICK

Win Click allows easy closing of the window door from the outside, without the need to turn the handle on the inside. Unique look and high strength. Choice of silver, brown, patinated gold, patinated bronze and white finishes.



MOSQUITO MESH

The mesh is made from glass fibre and prevents insects from entering. There are also window doors with hinges available, convenient for balconies and terraces.



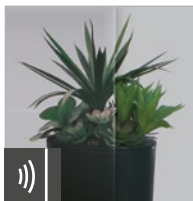
SUNSCREEN

There are several models to choose from.



SEALING

Weather strips in matching colours to withstand the impact of the weather, including moisture, water vapour and UV radiation.



NOISE-REDUCING GLASS

Reduces sound levels by up to 50 dB.



WARM SILL PROFILE

This profile can be used for maximising the energy-efficiency and air-tightness around the windows and particularly the base of the window where an aluminium sill is going. It is a fully insulated profile that connects seamlessly with the window and even has a special gasket to eliminate draft. Ask your Oknoplast expert for more details.

OPTIONS AND ACCESSORIES - SAFETY



FITTINGS

The high quality fittings and unique solutions guarantee the safe use of the windows for many years.

WINKHAUS PROLIGHT

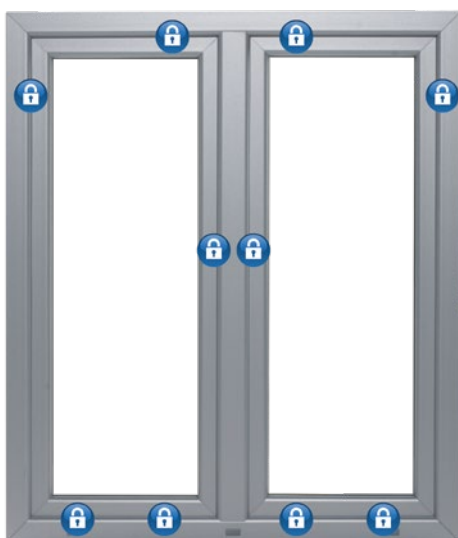
The passive removable sash has a bolt and built-in lever for a more elegant window design.

The lever facilitates the window sash operation whilst preventing the sash from accidentally closing. The window can also be leaned in steps by using the handle. The unique patented "safe location" solution means the specially designed fitting correctly locates the sash in the window.



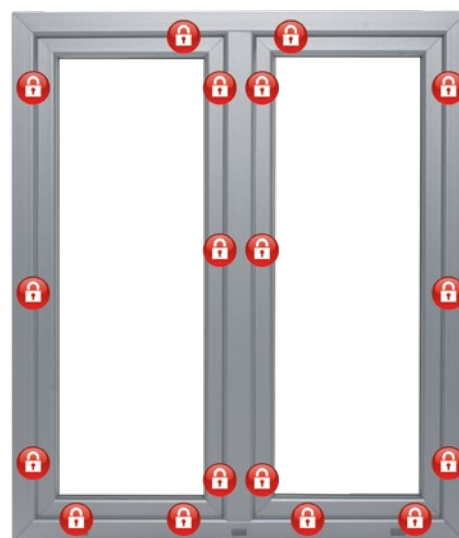


BURGLARY RESISTANCE



RC1-CLASS

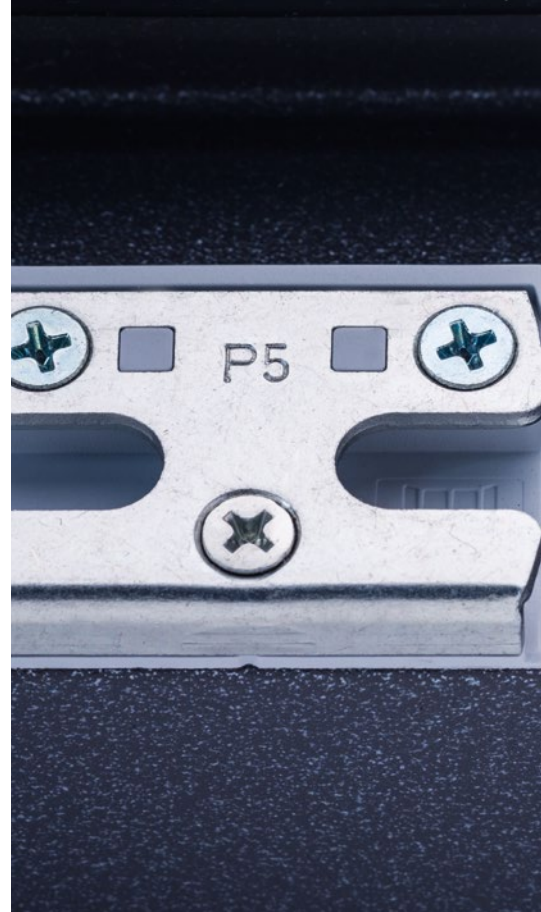
Burglary resistant brackets of RC1 resistance class guarantee protection against burglars using force (kick, strike, pull) via reinforcements in the window corners and a lockable handle with key.



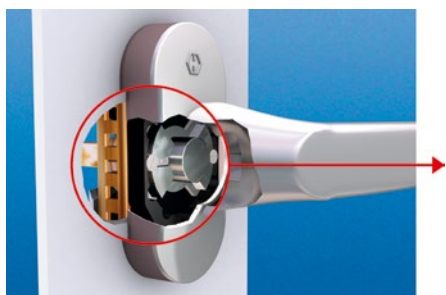
RC2-CLASS

Burglary resistant brackets in RC2 resistance class increase protection against burglars using force and tools. It prevents intrusion from the outside thanks to safety bolts, lockable handles with keys and burglary resistant glass of class P4.

SAFETY



Secustik Handle - details (non-standard)



SECUSTIK HANDLE

The handle is furnished with a unique blocking mechanism which makes interfering with the handle impossible from the outside. Access to the handle is blocked should someone attempt to open the window from the outside.



KISKA handle with key

Safety is increased due to the built-in glass, with the handle fixed in the locked position.





SAFETY GLASS

Using safety glass reduces the risk of burglary and is a guarantee of comfort.

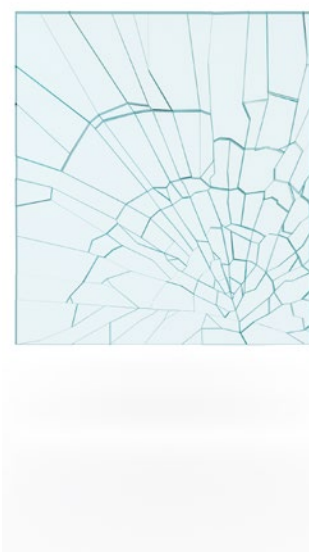
REGULAR GLASS

Safety glass is significantly less hazardous than non-tempered glass, because in the event of an accident the non-tempered glass creates sharp shards that can result in injuries.



LAMINATED GLASS

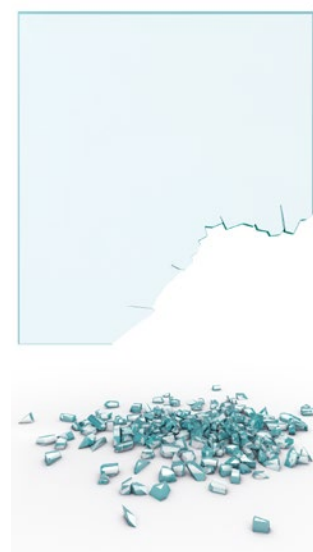
Glass packages in protection classes P2 and P4 with a protecting foil to prevent burglary, essential for large glass surfaces.



TEMPERED GLASS

Tempered glass has a higher impact resistance and comes as standard in all our windows and window doors.

Should the glass break, it shatters in a vast number of small pieces, reducing the risk of personal injuries.



OPTIONS AND ACCESSORIES - DESIGN

HANDLES

We developed the dESIGN+ suite of handles in conjunction with the Kiska design studio. These high-quality Kiska handles are made from aluminium, with the option of a key lock.

WINDOW HANDLES

Kiska models

All our standard windows are furnished with the dESIGN+ handle. The default door handle colour is Silver Grey F1, but can be produced in other colours.



Pixel



TBT



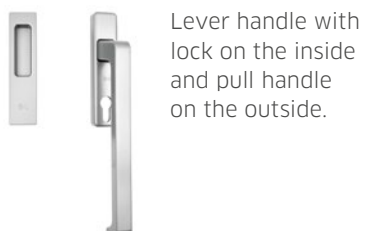


DOOR HANDLE

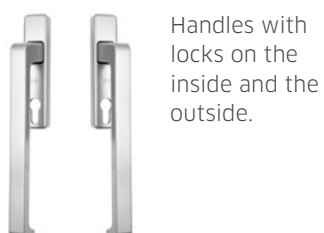
HST Lift-sliding door



Lever handle on the inside and pull handle on the outside.



Lever handle with lock on the inside and pull handle on the outside.



Handles with locks on the inside and the outside.

PSK Tilt-sliding door



DESIGN



MULLION

Insulated glass units may have a built-in mullion or a mullion glued to the glass. Mullions come in various widths and colours, and are customised with regard to the windows.



INTERNAL GLAZING BAR

Aluminium white enamelled:
8 mm, 18 mm, 26 mm, 45 mm.



DUPLEX MULLION

Glass-dividing mullion in PVC/
aluminium: 25 mm, 40 mm, 55 mm.



CONCEALED HINGES

Winkhaus ProLight Select / Multi Power hinges are concealed between the frame and the sash. This unique solution enhances the aesthetic properties of the windows while improving sealing, facilitating window cleaning and also the mounting of slat blinds, roller blinds and shutters.



ALUMINIUM CLADDING

For the Konzept, Wingergetic and Pixel systems.



DESIGN

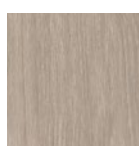
COLOURS

We offer a wide range of colours. See some examples below.

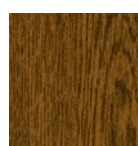
PVC-FOIL COLOUR SAMPLES



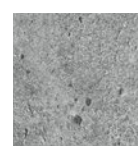
* PVC foil in the chosen colour is bonded to the PVC profile using a specific heat process, which makes the colour highly wear-resistant.



sheffield oak



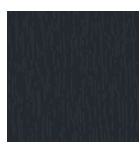
walnut



concrete



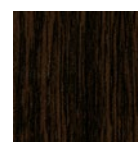
winchester



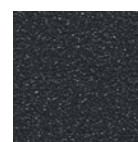
anthracite



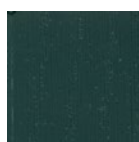
golden oak



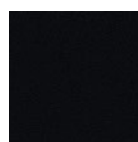
bog oak



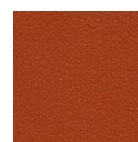
anthracite quartz



anthracite wood



black jet



copper



wooddec oak malt



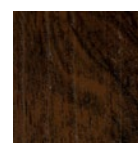
alu over titan



real wood white



real wood golden oak



real wood walnut





COLORFULL

Windows full of colour

- Aside from the visible parts, we also add colour to the other surfaces - visible once the window is opened.
- The entire profile surface has a uniform colour and structure, which gives the PVC window a pleasant character.
- ColorFull is available for all systems except Danline.
- ColorFull received the best product award from an Italian construction portal, "Edilportale."
- ColorFull can only be combined with a wood-imitation foil.





MBC PROJECT
OKNOPLAST IRELAND

Dublin

Unit 14 Primeside Park
Ballycoolin, Dublin 15
D15 WV97

Cork

17 North Point Business Park
New Mallow Road, Cork City
T23 PX20

Galway

25A Claregalway Corporate Park
Claregalway, Co. Galway
H91 HX56